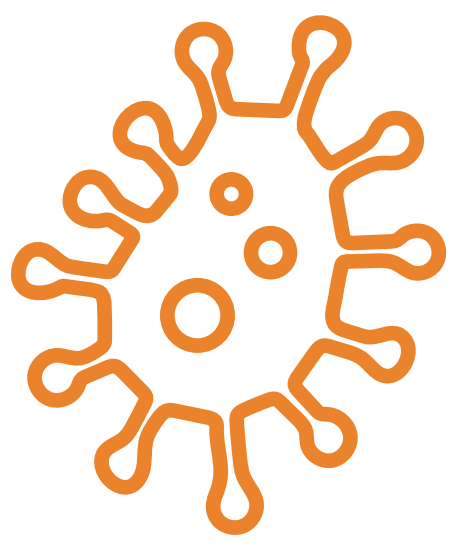


# OUR WATERSHEDS OUR RESOURCES: SANTA ANA RIVER WATERSHED

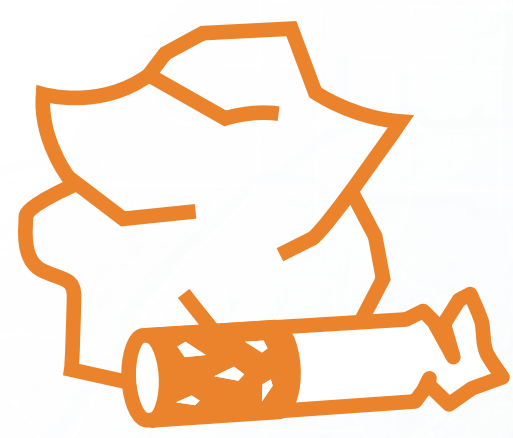
The Santa Ana River Watershed is only as healthy as we make it. By taking simple actions in our homes and communities we can all help the Santa Ana River Watershed thrive!

## COMMON POLLUTANTS



### Bacteria

- Pet waste
- Sewage spills
- Sewer lateral leaks
- Septic system leaks



### Trash

- Food wrappers
- Cigarette butts
- Straws
- Cups

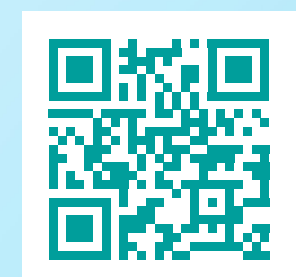


### Pesticides

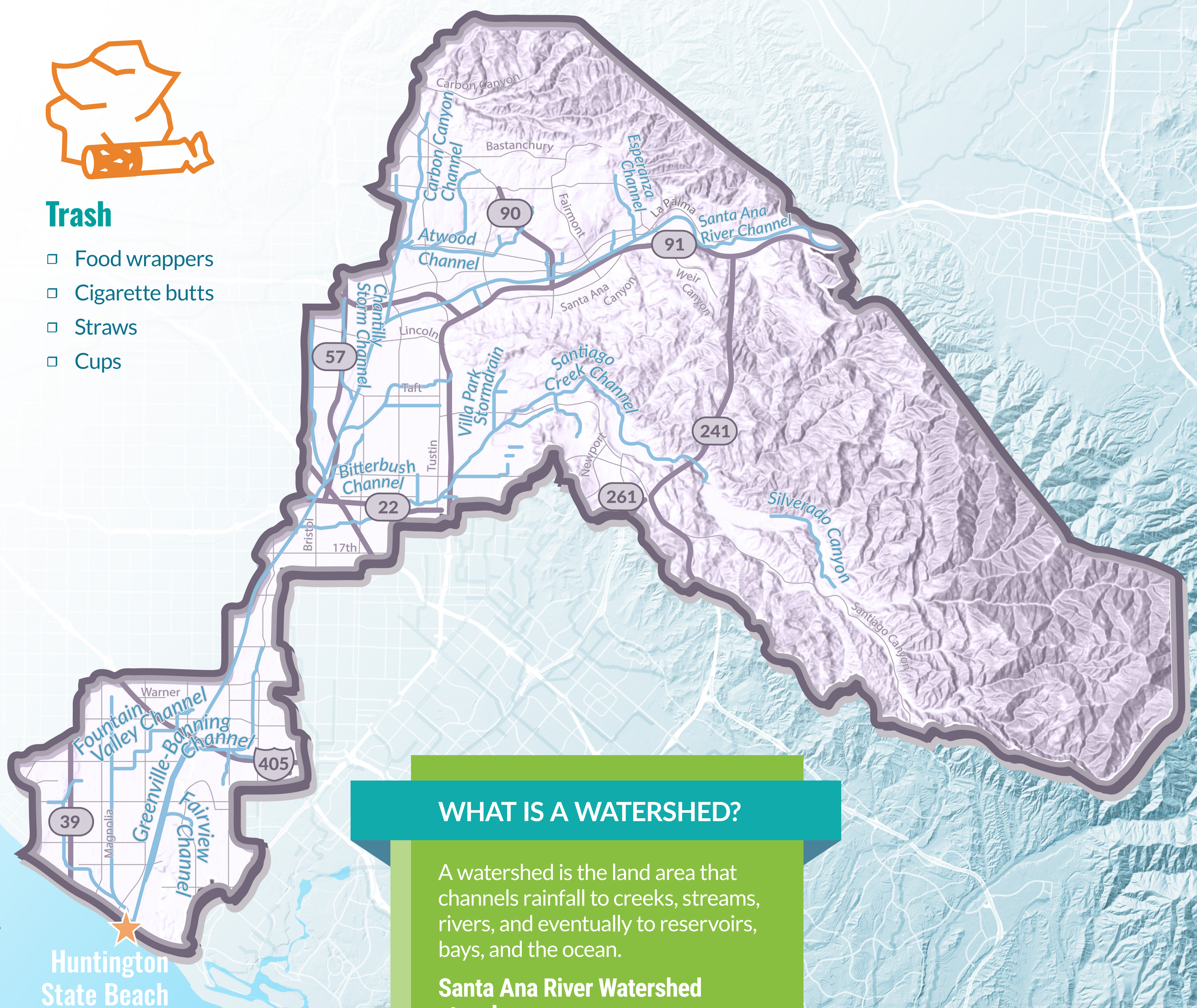
- Herbicides
- Insecticides
- Fungicides
- Rodenticides

Find out how you can prevent these pollutants from entering our waterways:

[h2oc.org](http://h2oc.org)



Pacific Ocean



## WHAT IS A WATERSHED?

A watershed is the land area that channels rainfall to creeks, streams, rivers, and eventually to reservoirs, bays, and the ocean.

### Santa Ana River Watershed at a glance:

- 2,650 square miles (210 in OC)
- Begins in the San Bernardino Mountains
- Discharges to the Pacific Ocean at Huntington State Beach

### Cities in the Watershed:

- Yorba Linda
- Santa Ana
- Brea
- Fountain Valley
- Placentia
- Costa Mesa
- Villa Park
- Newport Beach
- Orange
- Huntington Beach
- Anaheim
- Garden Grove

### Also includes:

- Orange County Flood Control District
- Unincorporated Orange County