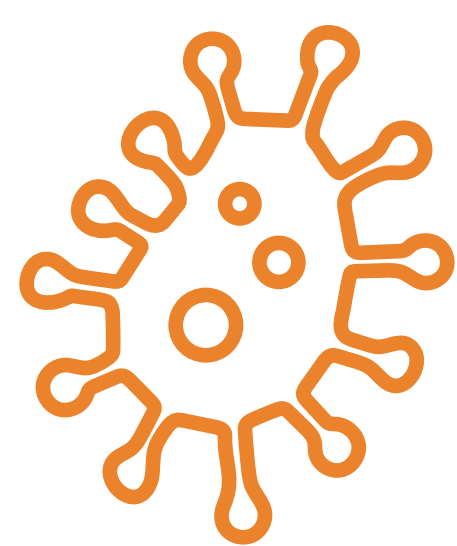


OUR WATERSHEDS OUR RESOURCES: NEWPORT BAY WATERSHED

The Newport Bay Watershed is only as healthy as we make it. By taking simple actions in our homes and communities we can all help the Newport Bay Watershed thrive!

COMMON POLLUTANTS



Bacteria

- Pet waste
- Sewage spills
- Sewer lateral leaks
- Septic system leaks



Trash

- Food wrappers
- Cigarette butts
- Straws
- Cups



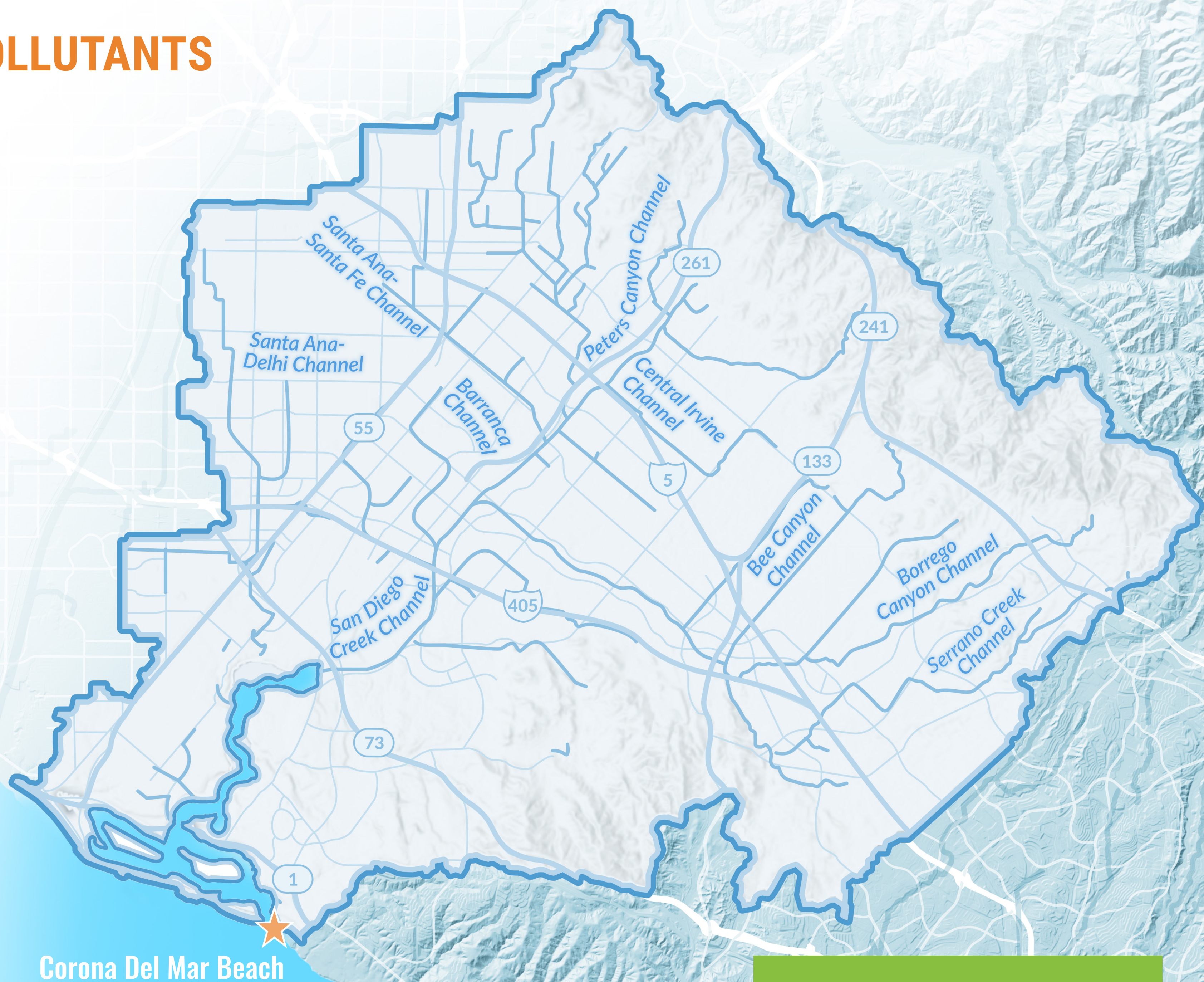
Pesticides

- Herbicides
- Insecticides
- Fungicides
- Rodenticides



Nutrients

- Fertilizers
- Detergents



Corona Del Mar Beach

Pacific Ocean


WHAT IS A WATERSHED?

A watershed is the land area that channels rainfall to creeks, streams, rivers, and eventually to reservoirs, bays, and the ocean.

Newport Bay Watershed at a glance:

- 154 square miles
- Begins at Peters Canyon and runs along Loma Ridge
- Discharges to the Pacific Ocean at Corona Del Mar Beach

Cities in the Watershed:

- Tustin
- Laguna Woods
- Orange
- Laguna Hills
- Santa Ana
- Costa Mesa
- Irvine
- Newport Beach
- Lake Forest

Also includes:

- Orange County Flood Control District
- Unincorporated Orange County

Find out how you can prevent these pollutants from entering our waterways:

h2oc.org

