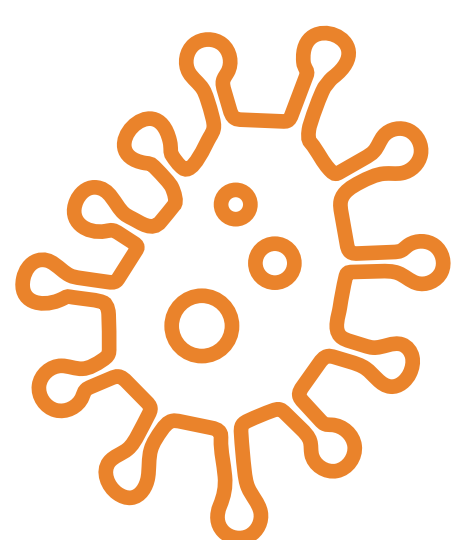


OUR WATERSHEDS OUR RESOURCES: ANAHEIM BAY/HUNTINGTON HARBOUR WATERSHED

The Anaheim Bay/Huntington Harbour Watershed is only as healthy as we make it. By taking simple actions in our homes and communities we can all help the Anaheim Bay/Huntington Harbour Watershed thrive!

COMMON POLLUTANTS



Bacteria

- Pet waste
- Sewage spills
- Sewer lateral leaks
- Septic system leaks



Trash

- Food wrappers
- Cigarette butts
- Straws
- Cups



Pesticides

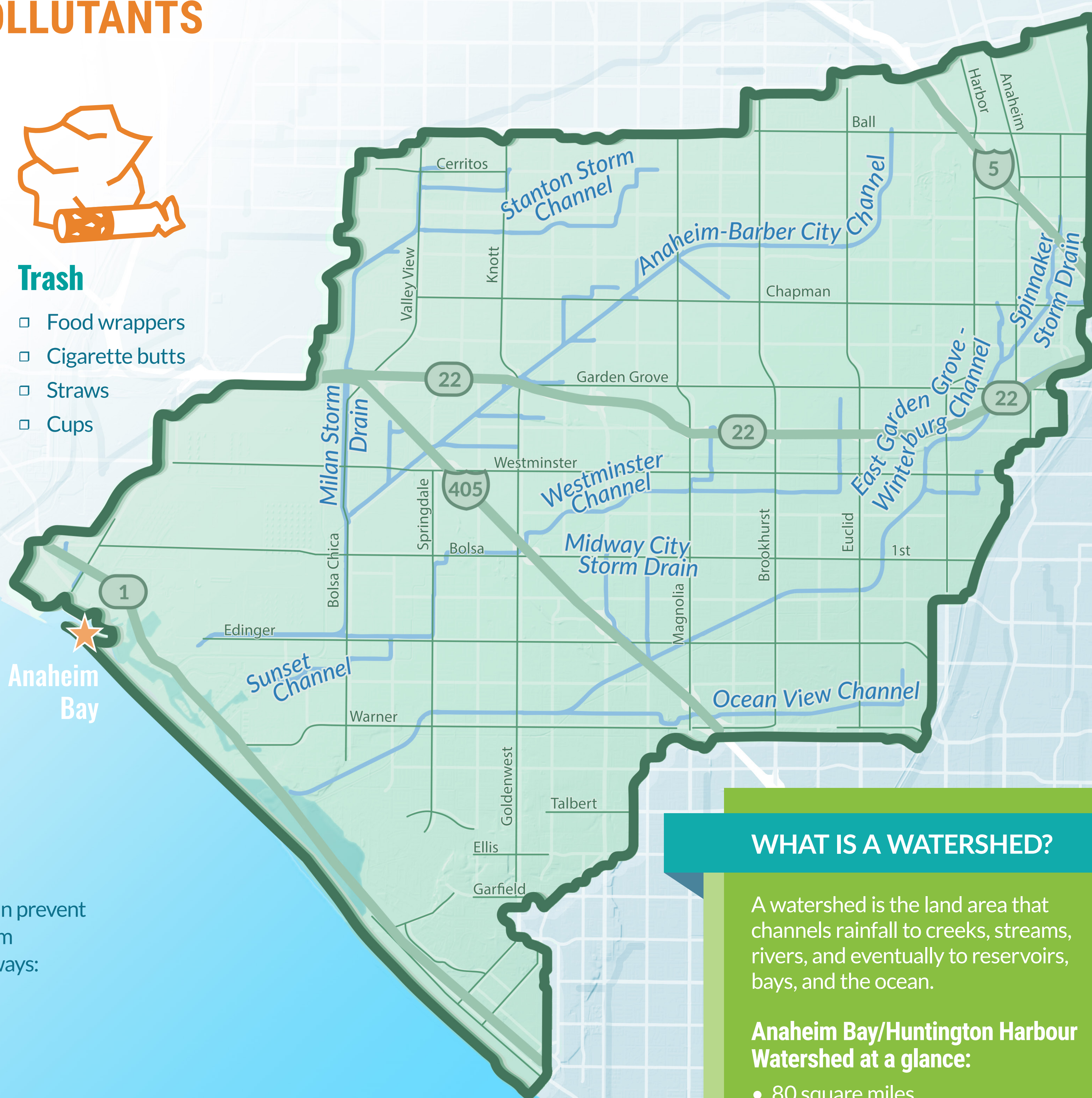
- Herbicides
- Insecticides
- Fungicides
- Rodenticides

Find out how you can prevent these pollutants from entering our waterways:

h2oc.org



Pacific Ocean

WHAT IS A WATERSHED?

A watershed is the land area that channels rainfall to creeks, streams, rivers, and eventually to reservoirs, bays, and the ocean.

Anaheim Bay/Huntington Harbour Watershed at a glance:

- 80 square miles
- Begins near Anaheim Town Square
- Discharges to the Pacific Ocean at Anaheim Bay in Huntington Beach

Cities in the Watershed:

- Anaheim
- Stanton
- Garden Grove
- Santa Ana
- Orange
- Westminster
- Cypress
- Los Alamitos
- Fountain Valley
- Seal Beach
- Huntington Beach

Also includes:

- Orange County Flood Control District
- Unincorporated Orange County