

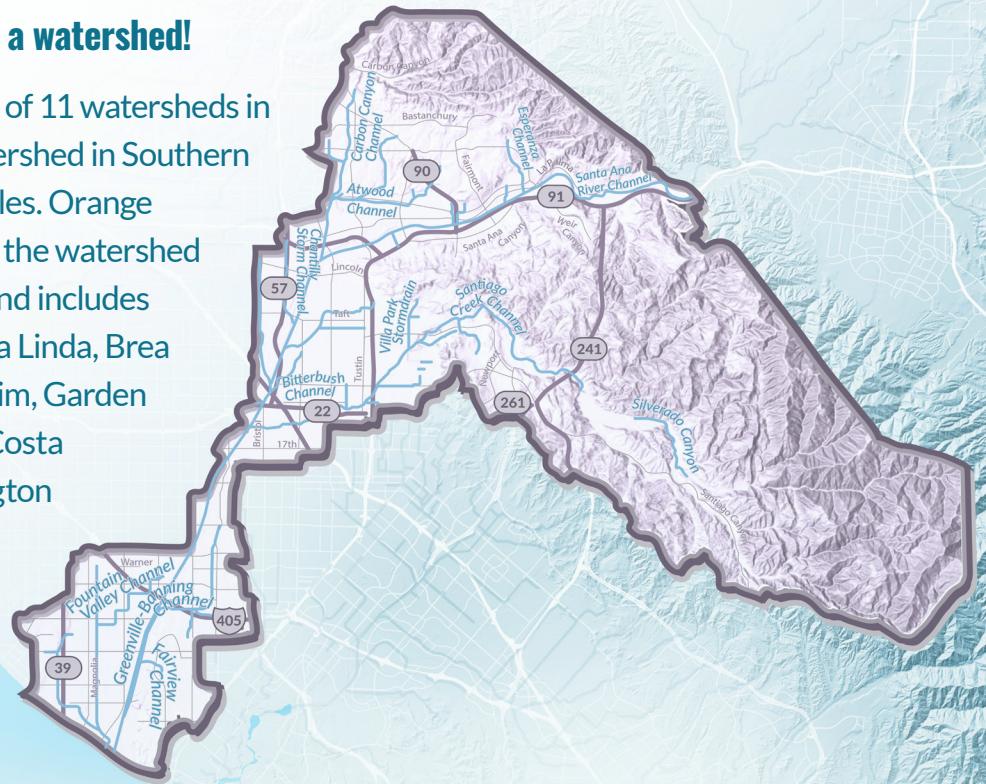
OUR WATERSHEDS OUR RESOURCES: SANTA ANA RIVER WATERSHED



A watershed is the land area that channels rainfall to creeks, streams, rivers, and eventually to reservoirs, bays, and the ocean.

All of Orange County is located in a watershed!

The Santa Ana River Watershed is 1 of 11 watersheds in Orange County. It is the largest watershed in Southern California spanning 2,650 square miles. Orange County's 210 square mile portion of the watershed starts in the Santa Ana Mountains and includes all or part of 12 cities including Yorba Linda, Brea Placentia, Villa Park, Orange, Anaheim, Garden Grove, Santa Ana, Fountain Valley, Costa Mesa, Newport Beach, and Huntington Beach. There are also areas of Unincorporated Orange County and facilities managed by the Orange County Flood Control District in this watershed. The Santa Ana River is the largest waterway and flows from the San Bernardino Mountains through the watershed to meet the Pacific Ocean at Huntington State Beach. Whether you're hiking at Santiago Oaks Regional Park or checking out the OC Zoo in Irvine Regional Park, you're enjoying the Santa Ana River Watershed's resources.



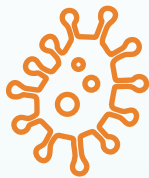
The Santa Ana River Watershed is only as healthy as we make it.
By taking simple actions in our homes and communities we can all help the
Santa Ana River Watershed thrive!

YOU ARE THE SOLUTION TO RUNOFF POLLUTION



Runoff pollution can harm our creeks, rivers, bays, and ocean. Unlike the sewer system, which treats waste water from inside our homes and businesses, **anything that goes into the storm drain system flows untreated into our waterways.** Most OC residents value clean waterways, so it's important to join your neighbors and do your part to protect our water resources.

In the Santa Ana River Watershed, our top priority is preventing pollution from bacteria, trash, and pesticides. This pollutant can occur from everyday actions like walking your dog, having a picnic, or maintaining your landscape. **When not properly managed, rainwater and irrigation runoff can transport these pollutants to our waterways where they can impact aquatic life and human health.** Here are some simple ways to protect our watershed:



Bacteria

(from pet waste and sewage spills)

- Carry bags when walking pets and dispose of pet waste in a covered bin.
- Pick up pet waste in your yard at least once a week and before any forecasted rain events.
- Have a licensed plumber create a maintenance plan for your sewer laterals and report sewage spills immediately (see reporting hotline below).



Trash

(waste on the ground)

- Place all trash in closed bins.
- Leave no trace when enjoying this watershed's resources.
- If your waste bin is broken, contact your waste hauler to receive a replacement.



Pesticides

(chemicals in lawn care products)

- Use integrated pest management (IPM) to target specific pests in problem areas instead of widespread chemical use. For more information visit h2oc.org/IPM.
- If you must apply pesticides, only use the proper amount in accordance with the manufacturer's instructions.
- Apply pesticides when conditions are dry, wind is minimal, and rain is not in the forecast for the next 48 hours.

Help keep our watersheds healthy! If you see any pollution, you can report it by calling the **24-hour Pollution Reporting Hotline: 1-877-89-SPILL (1-877-897-7455)** or visiting myOCeServices.ocgov.com.

Who is H₂OC?

H₂OC is YOU! H₂OC is also a cooperative stormwater program which includes all 34 cities in Orange County, the County of Orange, and Orange County Flood Control District. Visit h2oc.org to learn more about runoff, water pollution, and how you can be the solution to runoff pollution and protect our water resources.



To learn more about the Santa Ana River Watershed, go to:
h2oc.org/blog/santa-ana-river

